



**KMITSS**  
SECURE TODAY SCALE TOMORROW

● INTEGRATED TECHNOLOGY & CREATIVE SOLUTIONS

● SECURE TODAY SCALE TOMORROW

Cybersecurity

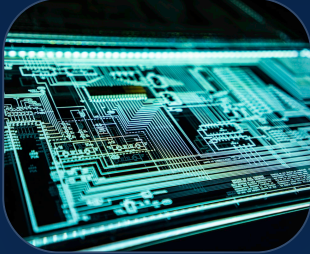
IT Infrastructure

Digital Products

Branding & Printing

# Building secure, scalable, and future-ready digital foundations for modern business growth.

KMITSS delivers cybersecurity, IT infrastructure, website development, mobile app, branding, printing, and managed support services for growing businesses.



One coordinated team across cybersecurity, IT infrastructure, websites, mobile apps, branding, printing, and managed support.

Managed support and IT manpower help keep rollout, monitoring, operations, and day-to-day technical execution covered after deployment.

## Integrated service mix

Technical delivery, digital execution, creative output, and post-deployment support stay aligned under one KMITSS team.

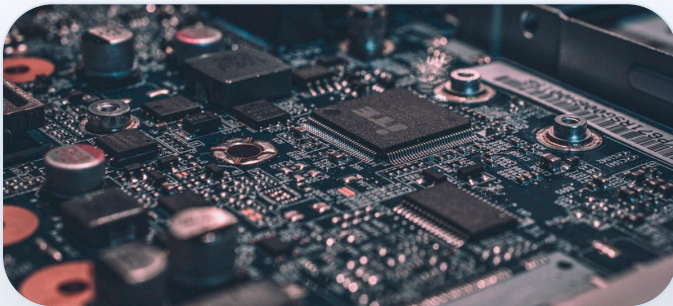
**Protection and infrastructure**  
Cybersecurity, server and storage, cloud, networking, backup, and continuity-focused support.

**Digital, creative, and support continuity**  
Corporate websites, mobile apps, branding, printing, gifting, managed support, and IT manpower under one team.



# Technical delivery and business-facing execution planned under one coordinated service model.

KMITSS combines planning, rollout, monitoring, maintenance, digital execution, and creative support so decisions stay practical, implementation stays coordinated, and outcomes remain measurable.



## Cybersecurity Solutions

Protection designed for evolving threats, stronger resilience, and better visibility across business-critical environments, with practical controls that help reduce risk and keep operations ready.

**Network Security:** Firewall management, intrusion detection, log review, segmentation support, and monitoring for safer day-to-day operations.

**Endpoint, Data & Cloud:** EDR, anti-malware, patching, encryption, DLP, cloud security support, and policy-led protection across users and workloads.

## IT Infrastructure Services

Scalable, high-performance foundations that support reliable operations while preparing teams for growth, uptime, and smoother day-to-day administration.

**Server & Storage:** Deployment, virtualization, capacity planning, backup, and disaster recovery readiness for business continuity.

**Cloud, Network & Support:** Migration, optimization, secure networking, incident response, health reporting, and operational support for stable performance.

## Digital Product & Application Services

Web and mobile solutions that help businesses launch faster, engage users better, and stay supported after go-live with practical maintenance and improvement cycles.

**Website Delivery:** Corporate sites, landing pages, CMS work, UI refresh, performance optimisation, and structured content rollout.

**Apps & Maintenance:** Cross-platform apps, secure integration, updates, monitoring, bug fixes, and post-launch support continuity.

## Creative & Printing Services

Professional brand and print execution that helps organisations communicate with greater clarity, consistency, and a stronger business presence.

**Branding & Design:** Identity systems, creatives, ads, campaign visuals, social media assets, and brand-led communication material.

**Print & Gifting:** Cards, brochures, catalogues, packaging, banners, merchandise, signage, and branded corporate gifting.



## Our Story

KMITSS was created for businesses that need one dependable team across infrastructure, cybersecurity, digital delivery, and brand support so execution stays connected and results are easier to manage.

## Vision

To be the most trusted one-stop partner for secure, scalable, and impactful business solutions.

## Our Mission

To empower businesses with reliable, innovative, and secure technology solutions while strengthening brand identity through creative excellence, practical execution, and long-term support.

### Protect

Deliver cybersecurity, monitoring, and infrastructure stability that helps environments stay protected and dependable.

### Empower

Provide scalable IT solutions, digital platforms, and responsive support that help teams grow with confidence.

### Elevate

Create stronger brand identities through thoughtful design, print execution, and communication material that reflects business value.

### Partner

Build long-term relationships through transparency, dependable delivery, and support that stays aligned with client goals.

## Managed Support & IT Manpower

Managed support and IT manpower help keep client environments covered after deployment where dependable hands-on resources are needed for rollout, continuity, and day-to-day execution.

**Support coverage:** Rollout, monitoring, operations, issue response, maintenance guidance, and technical execution.

**Dedicated manpower:** Extra technical hands for deployments, routine operations, coordination, user-side assistance, and ongoing continuity support.



## Trusted Technology Partnerships

KMITSS partners with deployment-ready cybersecurity platforms.



### Get In Touch

#### Our Office

B-360, 1st Floor, Mohan Garden, Dwarka Mor, 110059, New Delhi

#### Email

[sales@kmitss.com](mailto:sales@kmitss.com) | [kmitss@kmitss.com](mailto:kmitss@kmitss.com)

#### Phone

+91 99586 00661 | +91 87960 48012